

Breeze+



BZ-140 Pearl



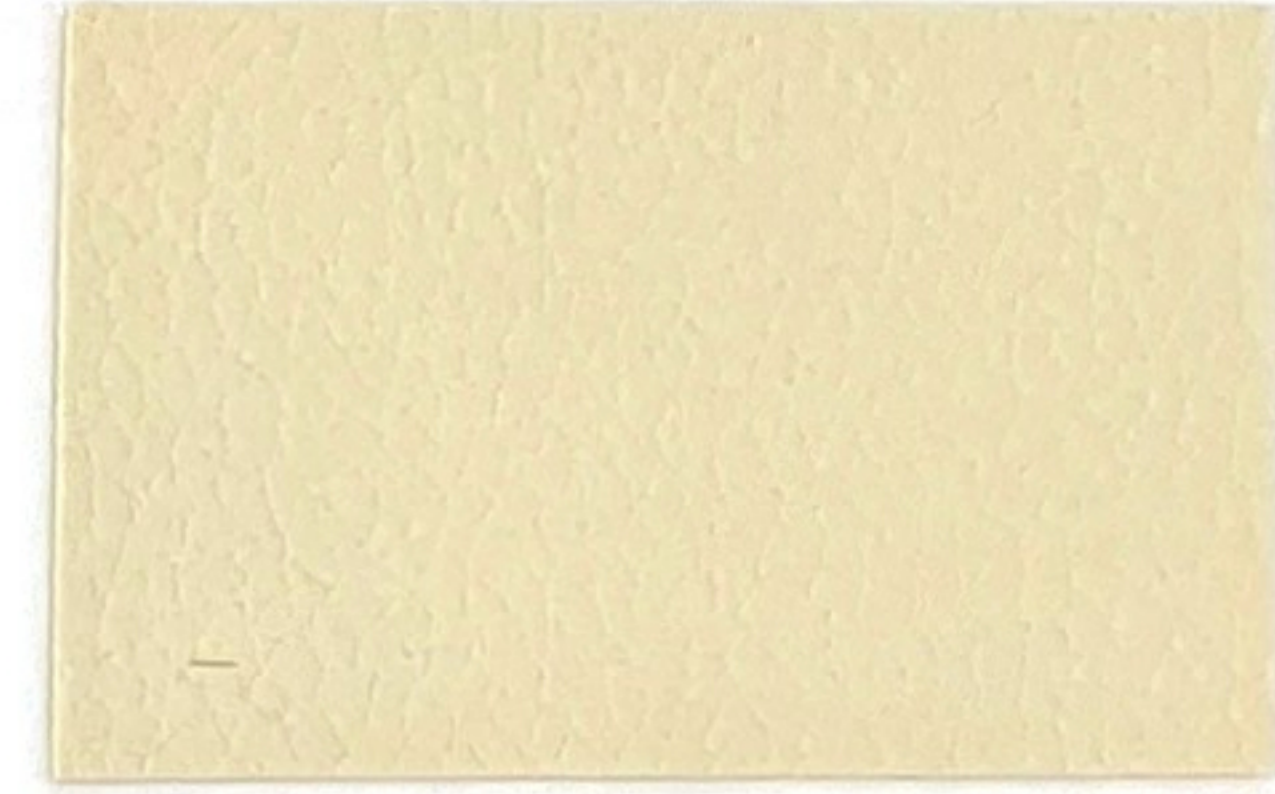
BZ-148 Ginger Distressed



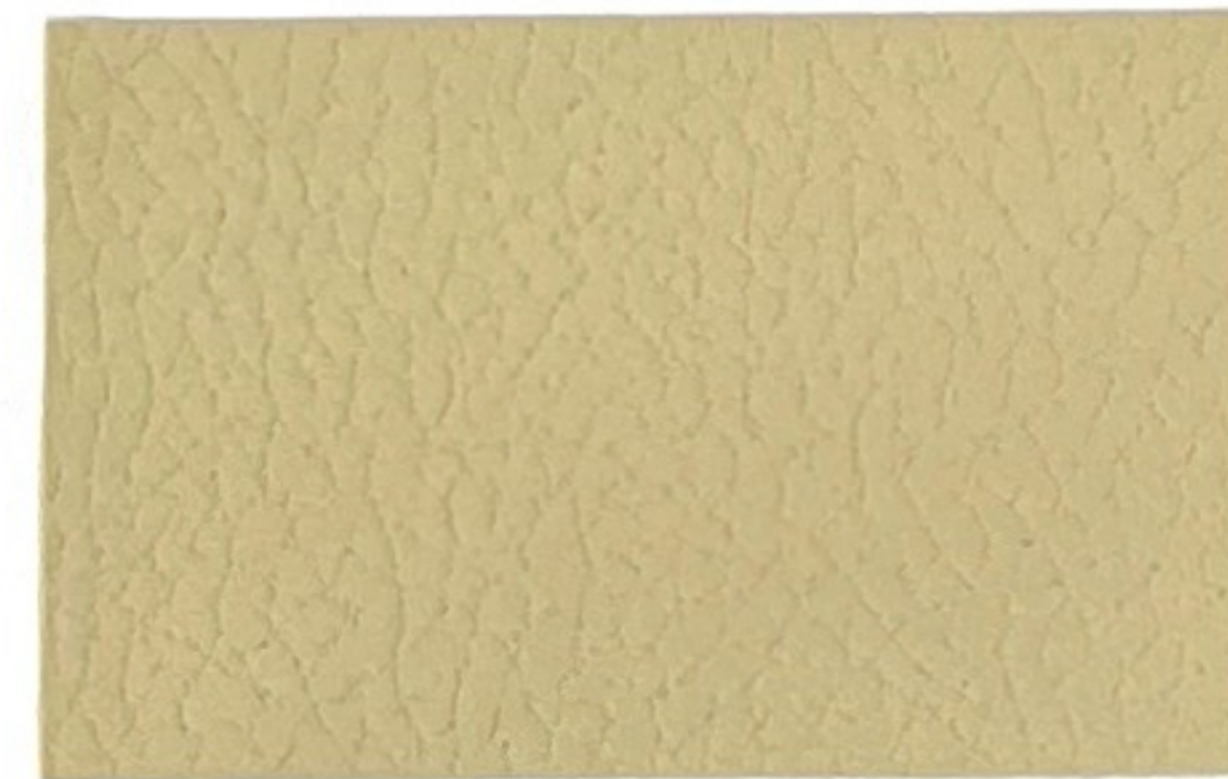
BZ-125 Polar White



BZ-117 Swiss Coffee



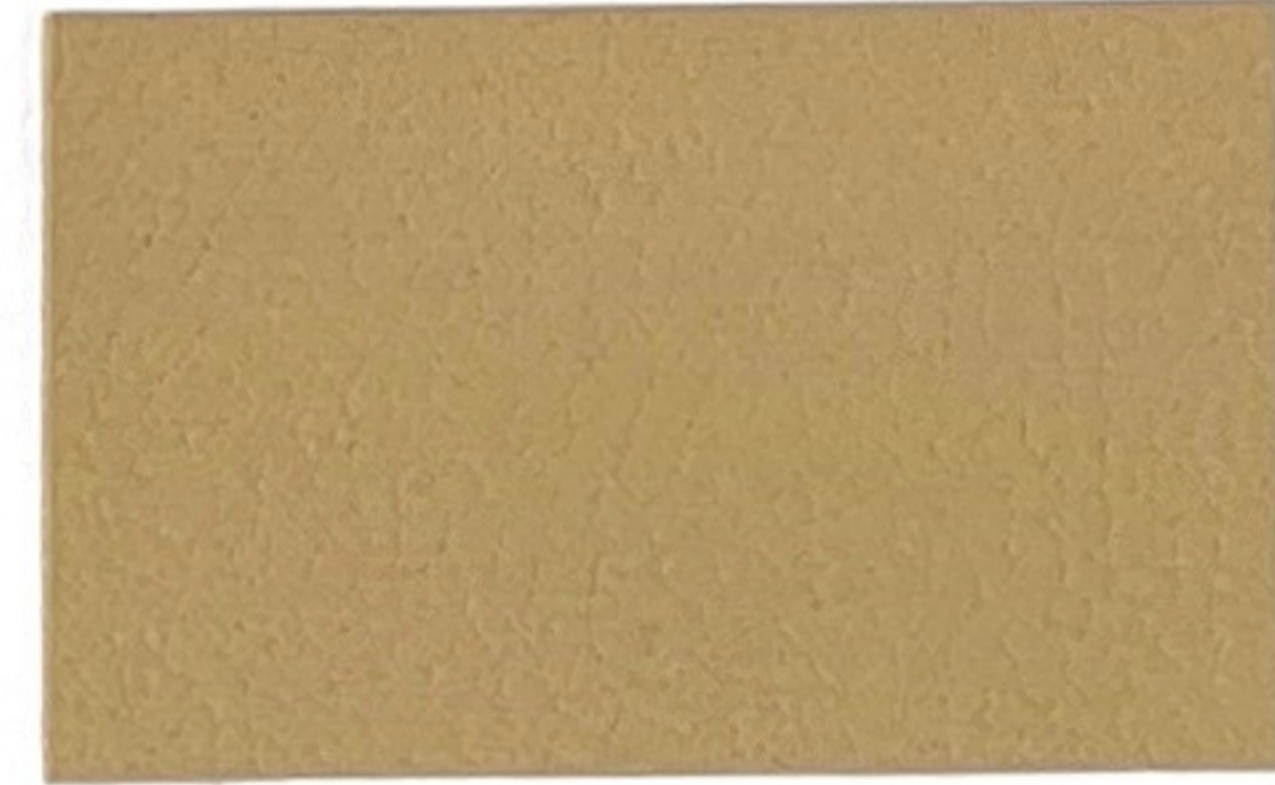
BZ-122 Silkwood



BZ-119 Tumbleweed



BZ-142 Toffee



BZ-116 Portobello



BZ-143 Frost



BZ-123 Nautical



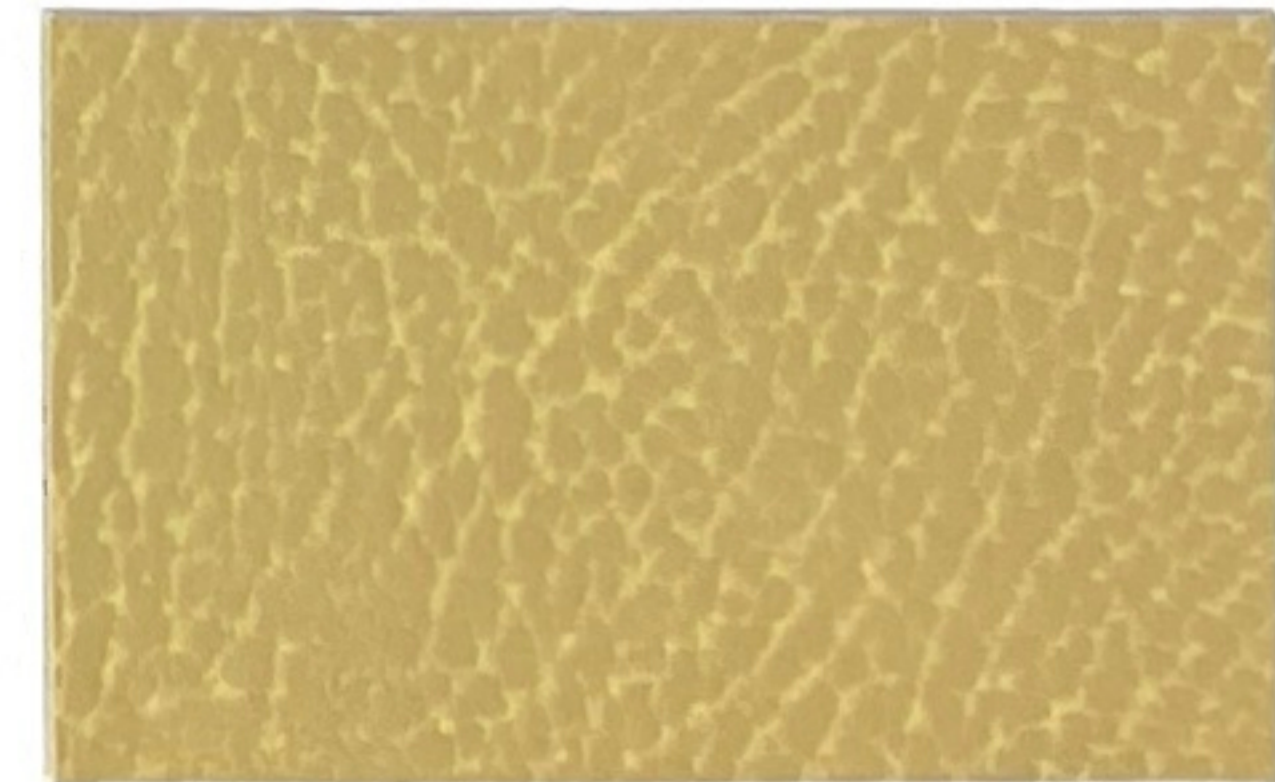
BZ-118 Red Rock



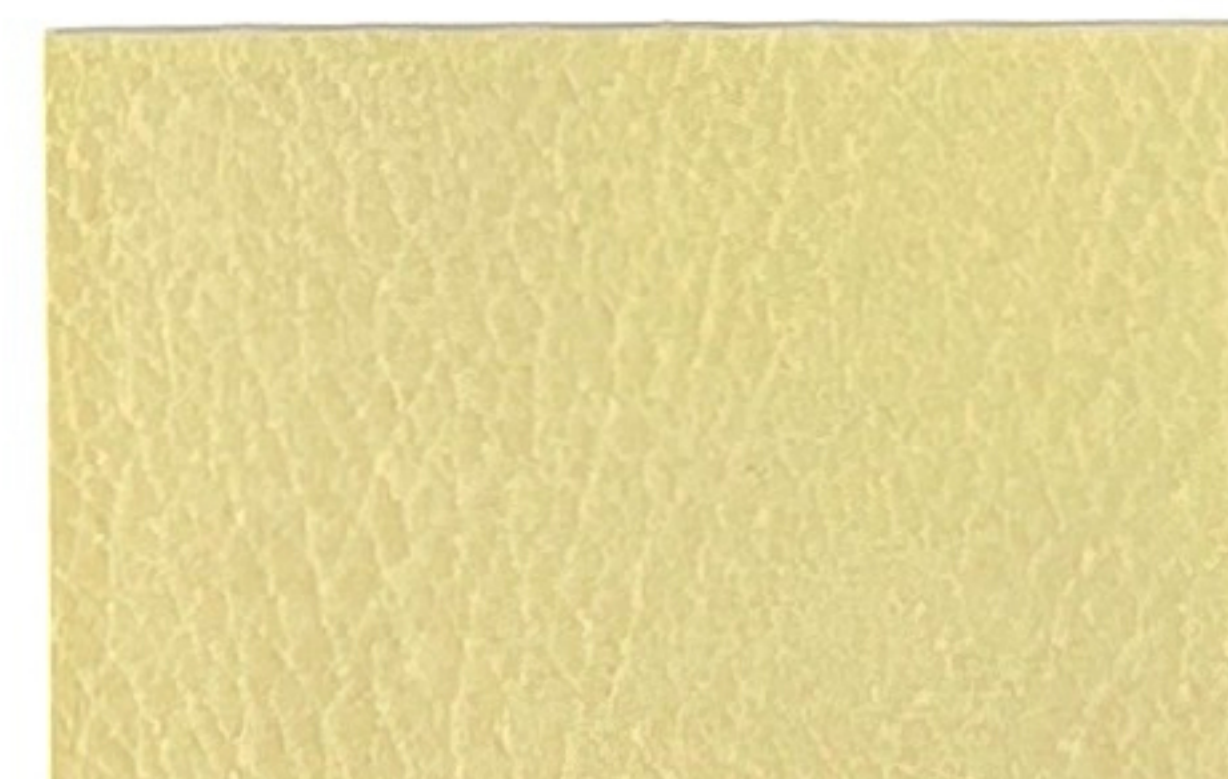
BZ-150 Slate Distressed



BZ-127 Kodiak Distressed



BZ-129 Driftwood Distressed



BZ-128 Latte Distressed



BZ-149 Mocha Distressed



BZ-121 Stealth



Breeze⁺

COLLECTION



www.advancedfabrics.co.uk

Breeze+

GENERAL SPECIFICATIONS

Composition:	100% polyurethane surface/ 100% reinforced rayon backing
Weight:	Approx. 9.0 oz Per Square Yard
Width:	54 inches

PERFORMANCE

Abrasion:	ASTMD4157/ 300,000 DOUBLE RUBS (Wyzenbeek)
Tongue Tear:	ASTMD751
Seam Strength:	ASTMD1683
Light Fastness:	AATCC 16.3 200 HOURS, GRADE 4
Hydrolysis:	14+ WEEKS ASTMD3690-02 SECT 6.11

F/R RATING

Passes CAL.117(E) | NFPA 260 1 Class | MVSS 3022
Can be treated to pass FAR 25.853, ASTM E84, ASTM 162, ASTM 662 & ALL
State, Federal and International fire codes

MAINTENANCE & CARE

- Keep your Luxor Leather™ surfaces looking new through routine and proper care.
- Wipe up spills as they occur
 - Clean up with mild soap and water
 - Thoroughly rinse with water and blot dry with a clean towel
 - Air dry



Advanced Fabrics Ltd
Unit 6b Brookside Industrial Estate
Sawtry
Huntingdon, Cambridgeshire, PE28 5SB
www.advancedfabrics.co.uk
Phone Number: 01487 843300