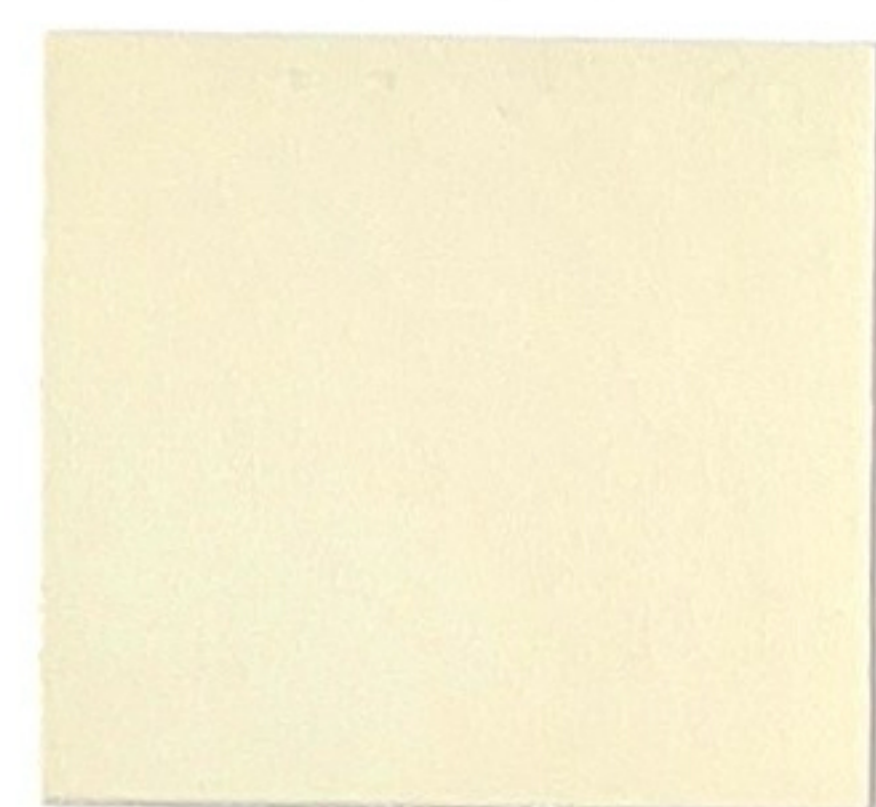


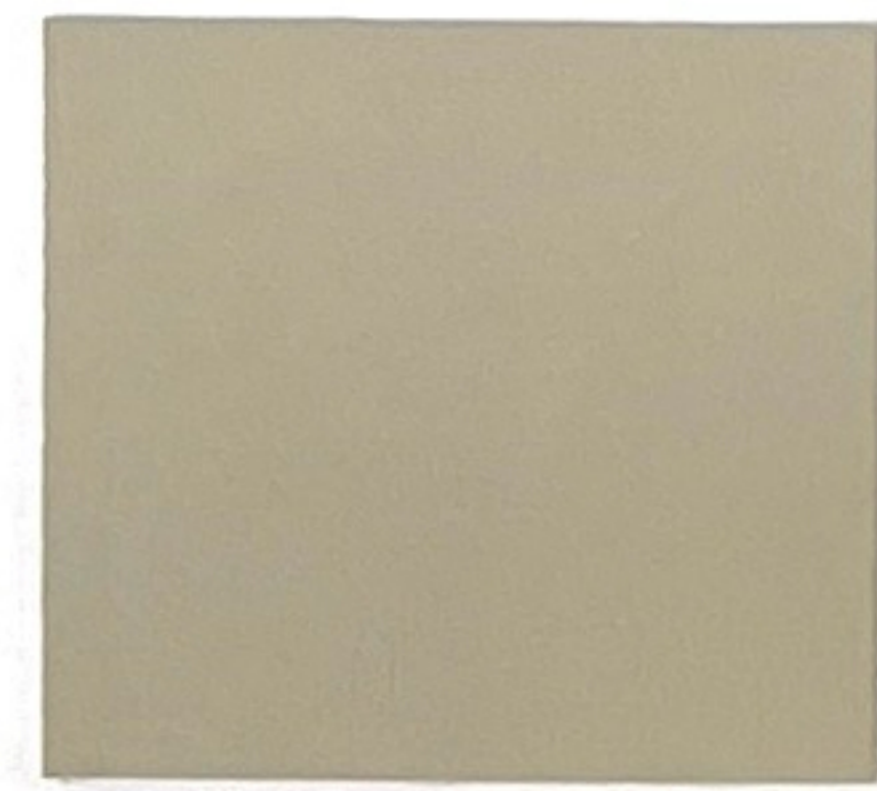
BR-134 Island Punch



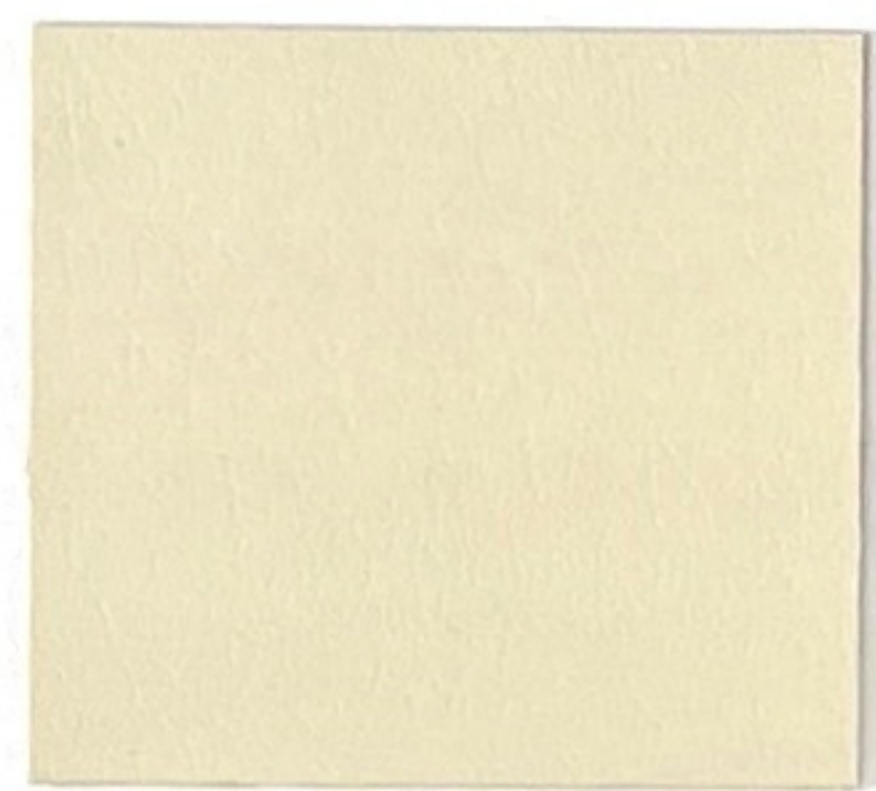
BR-700 White



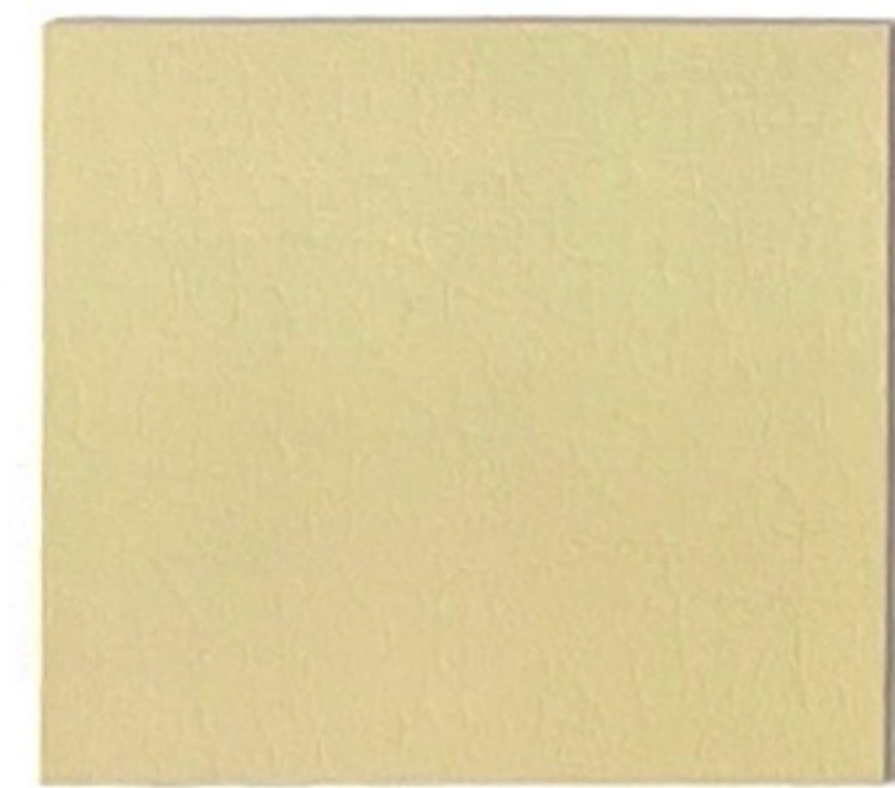
BR-01 Vellum



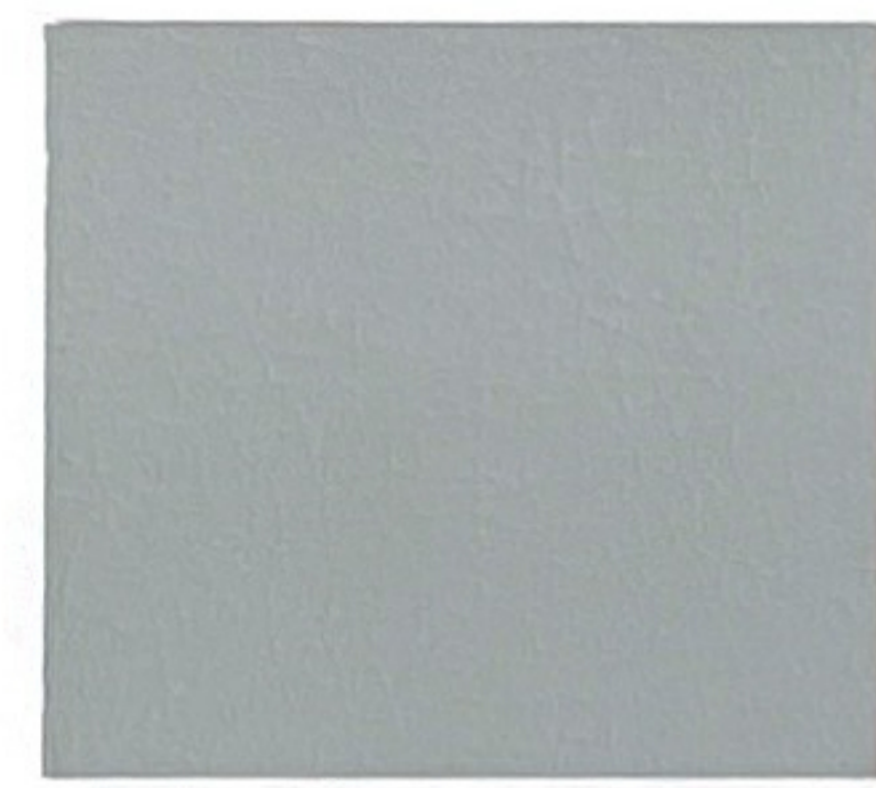
BR-357 Stone



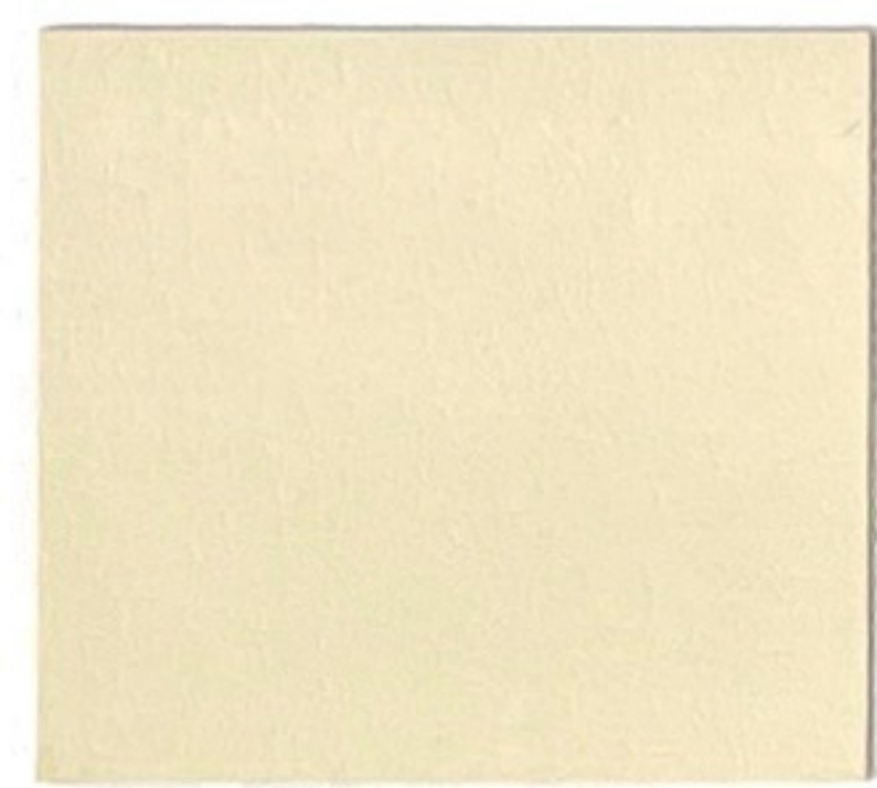
BR-227 Wheat



BR-212 Manilla



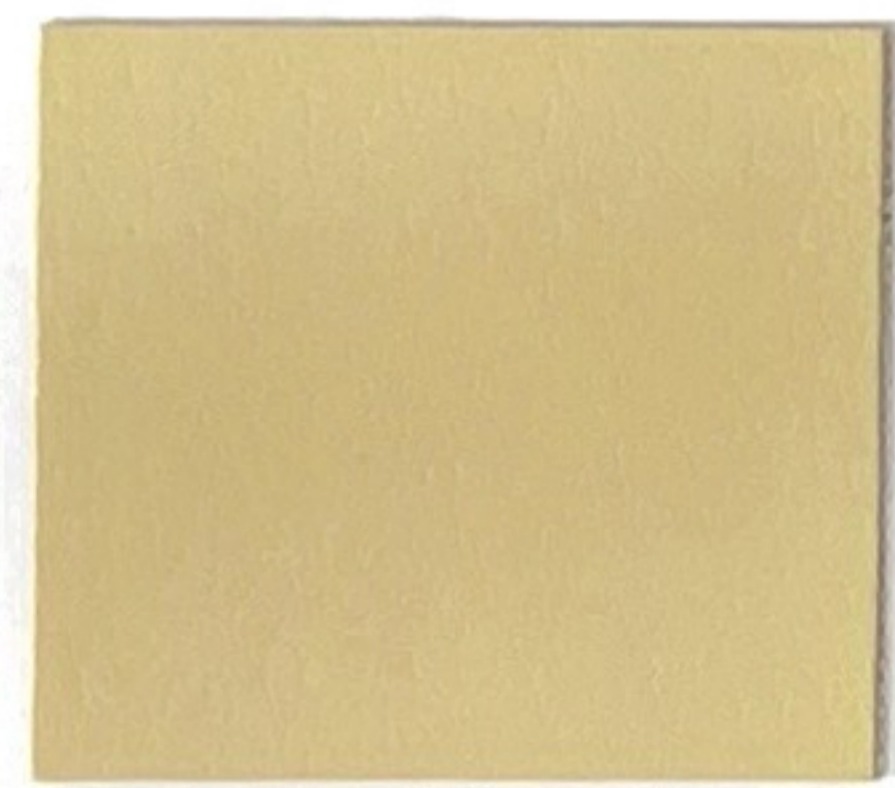
BR-553 Dove Grey



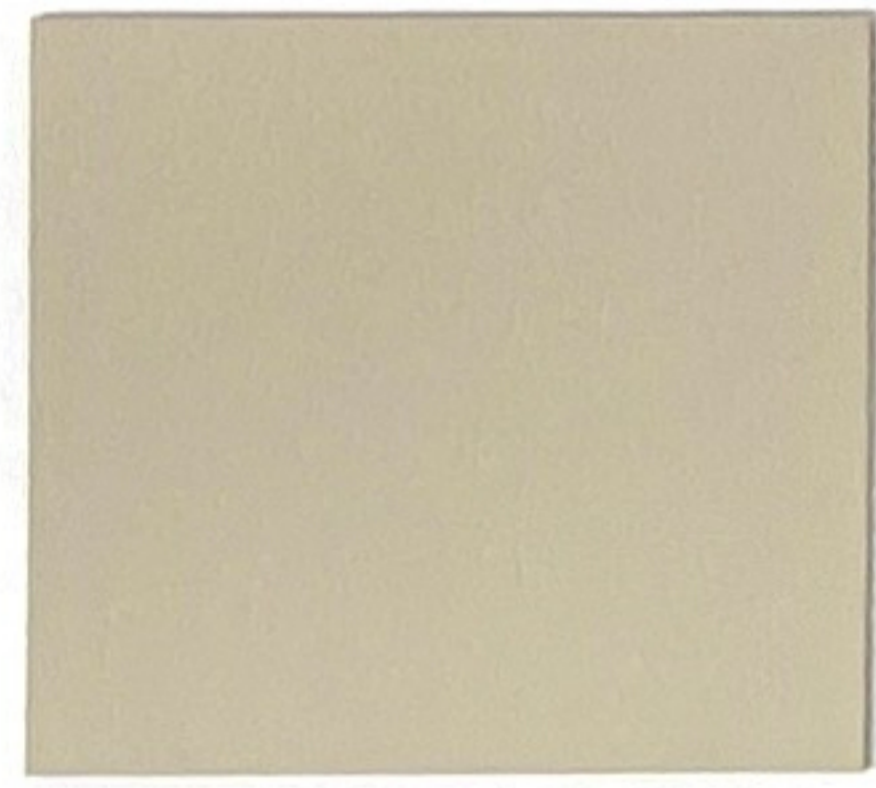
BR-175 French Vanilla



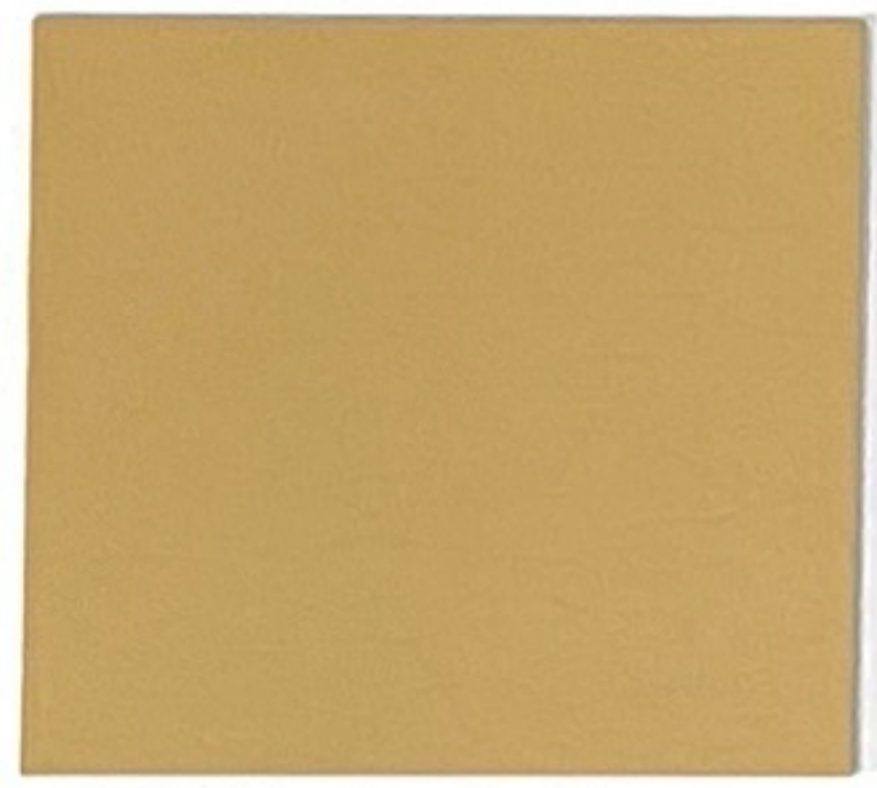
BR-176 Snow White



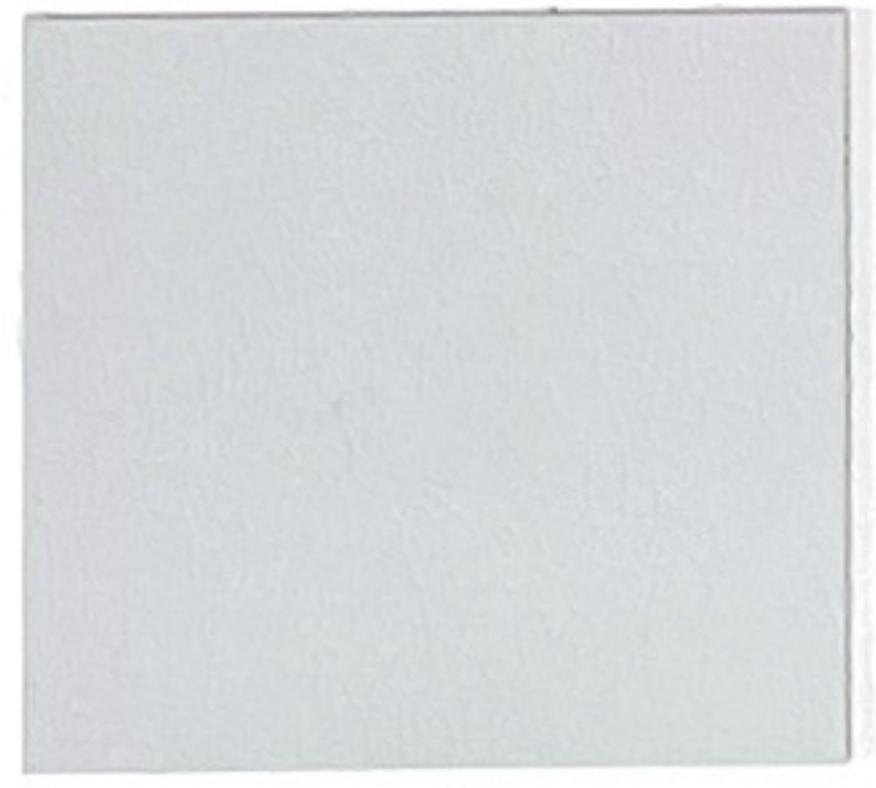
BR-710 Silk



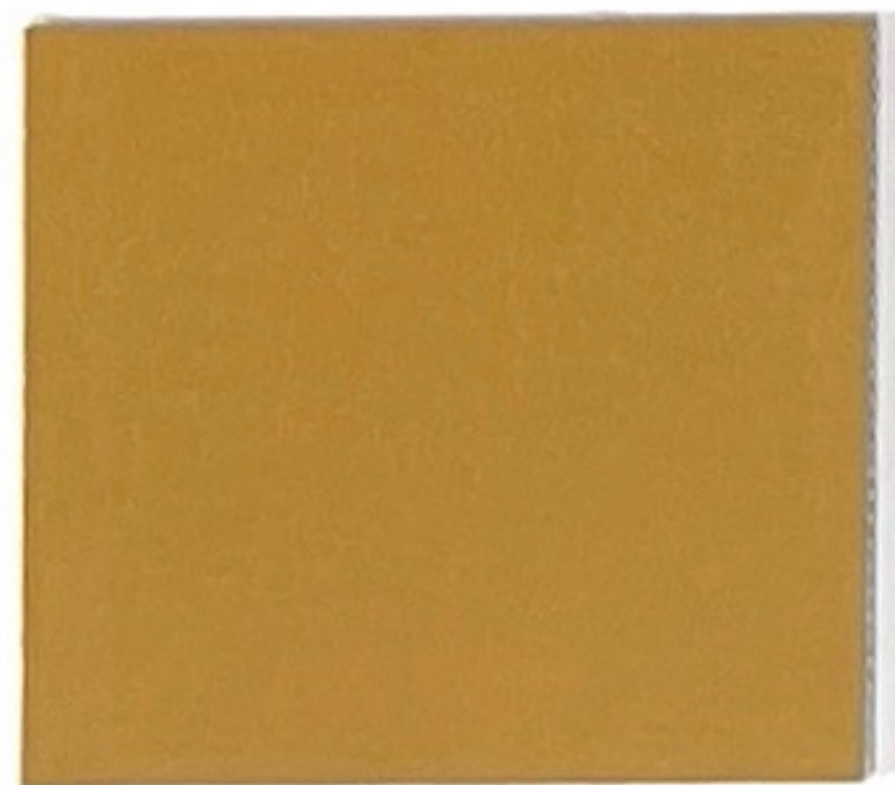
BR-05 Doe



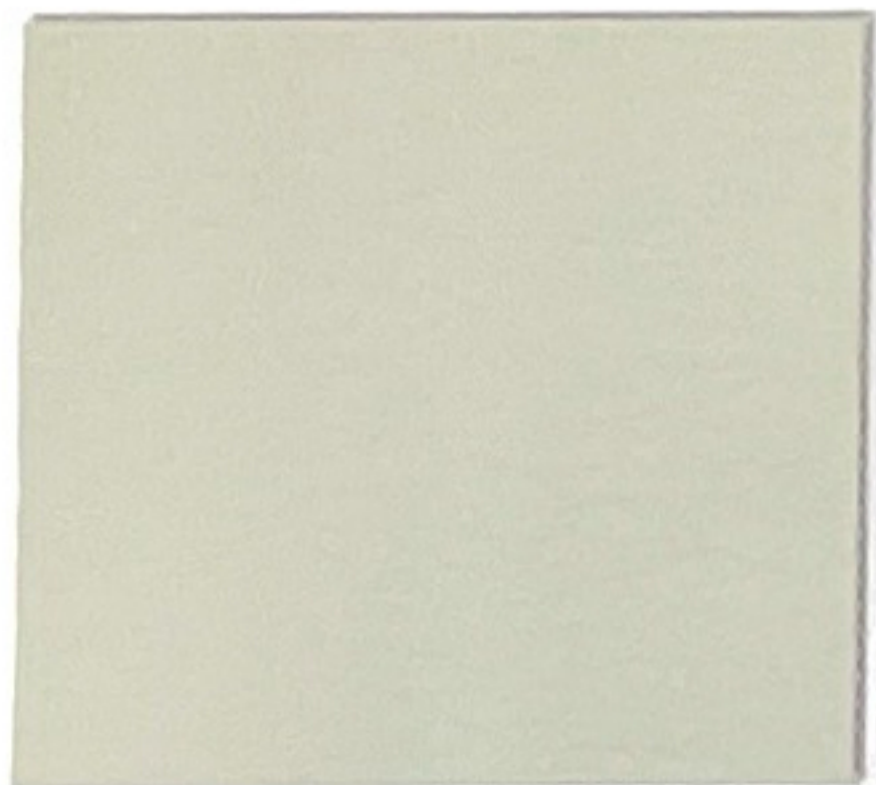
BR-166 Cashew



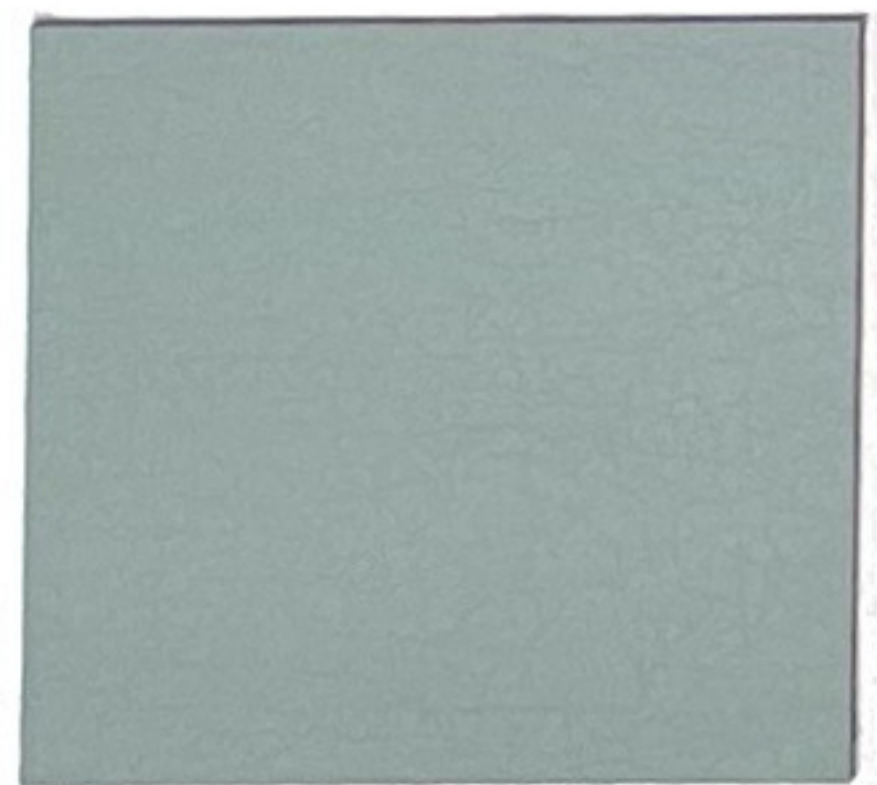
BR-555 Silver Pearl



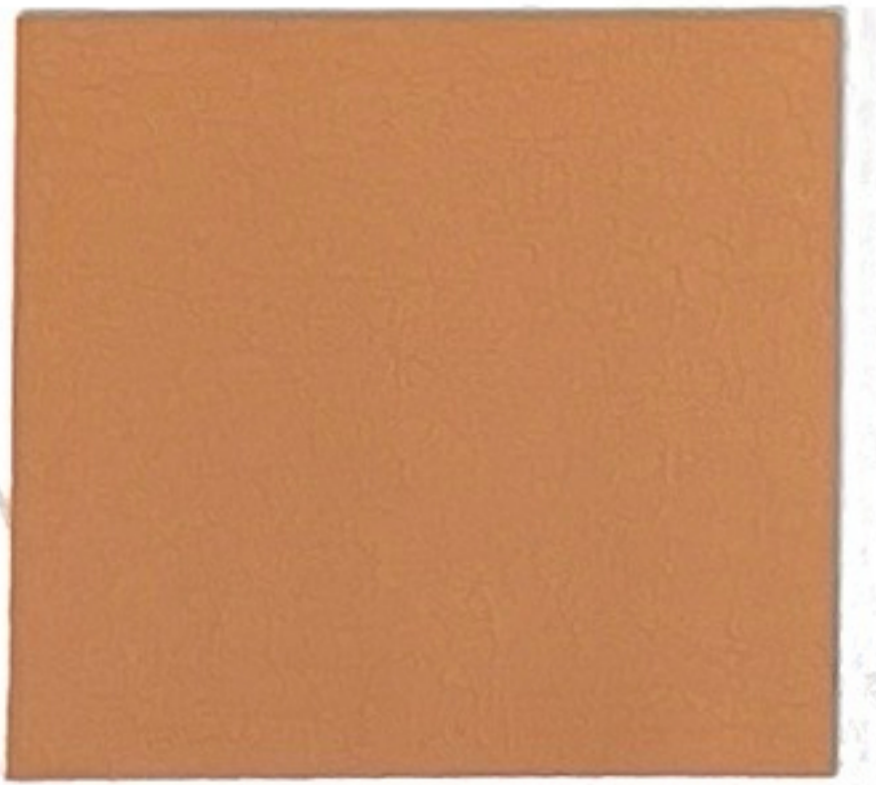
BR-267 Ochre



BR-220 Aria



BR-135 Slate



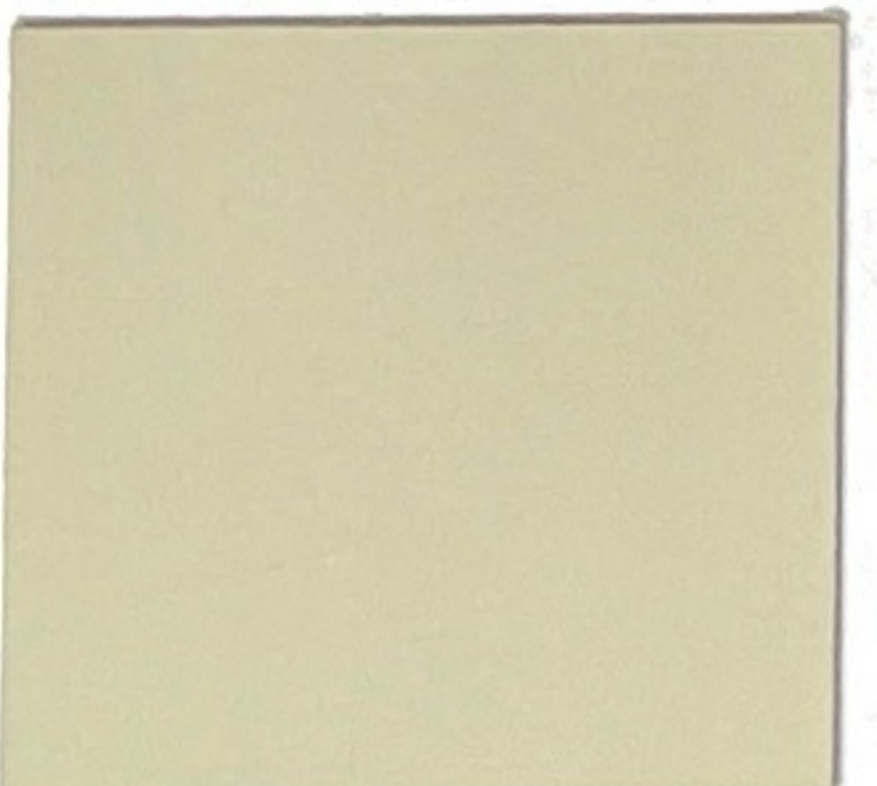
BR-163 Terracotta



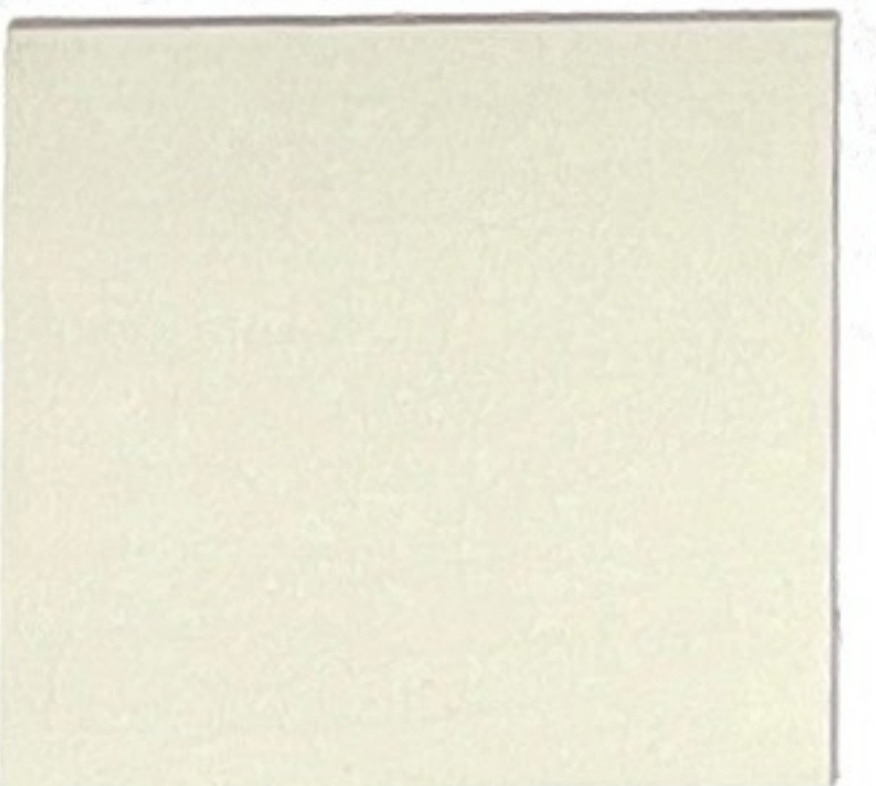
BR-329 Buff



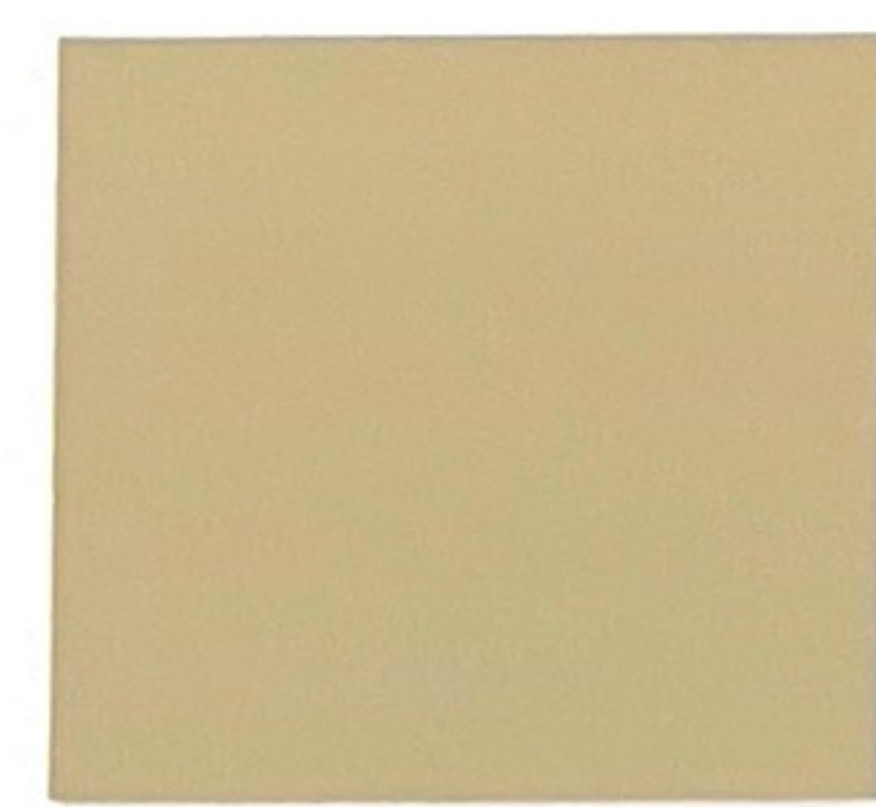
BR-130 Pewter



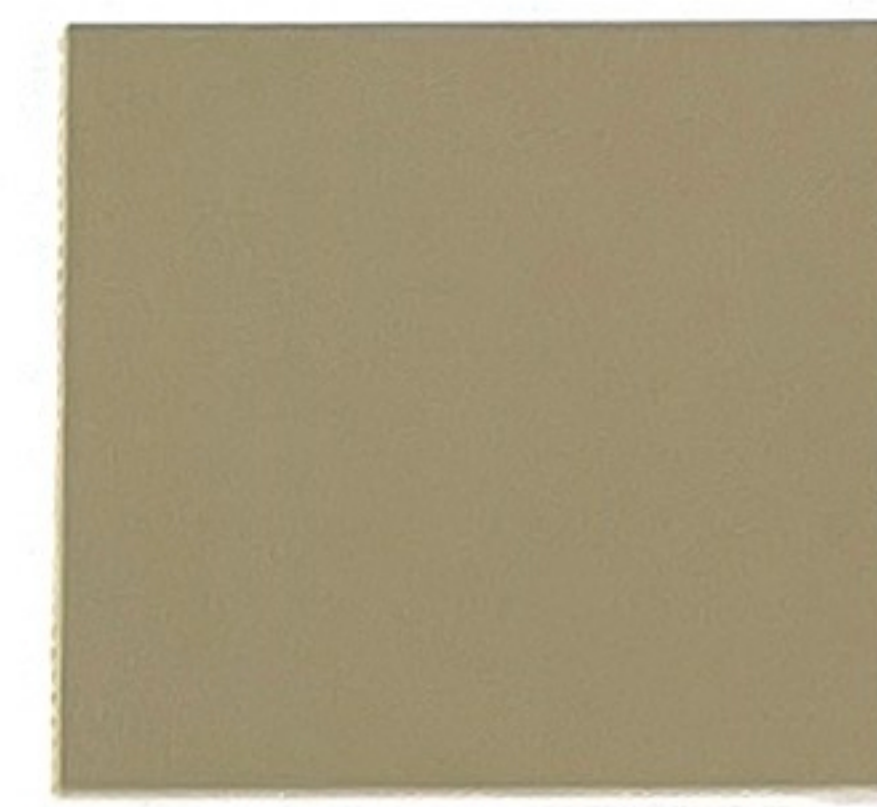
BR-214 Milkweed



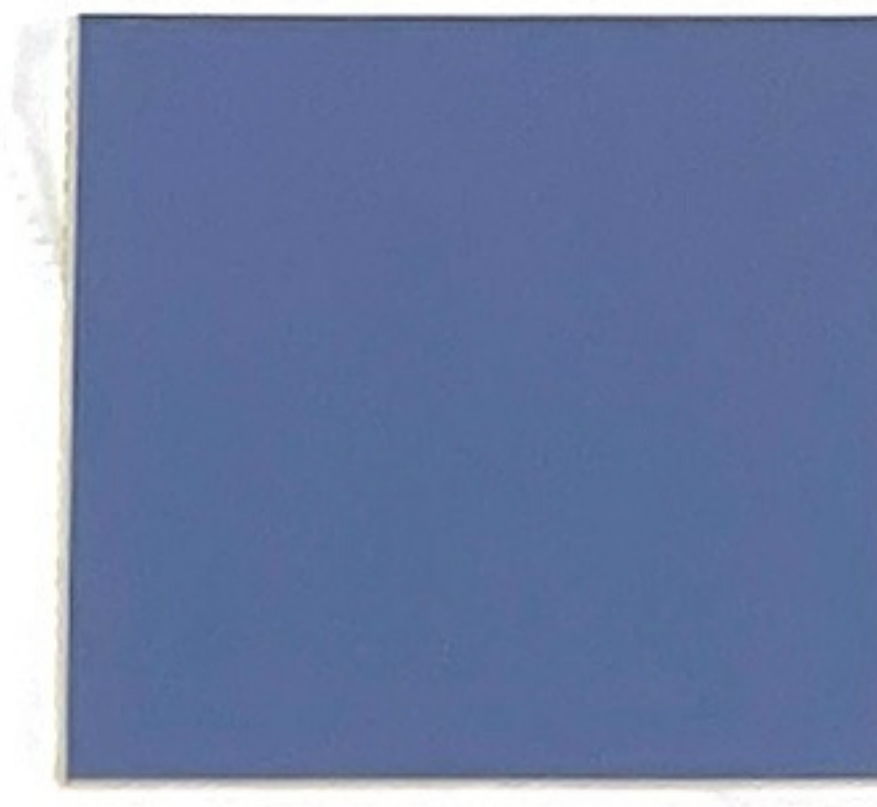
BR-709 Rice



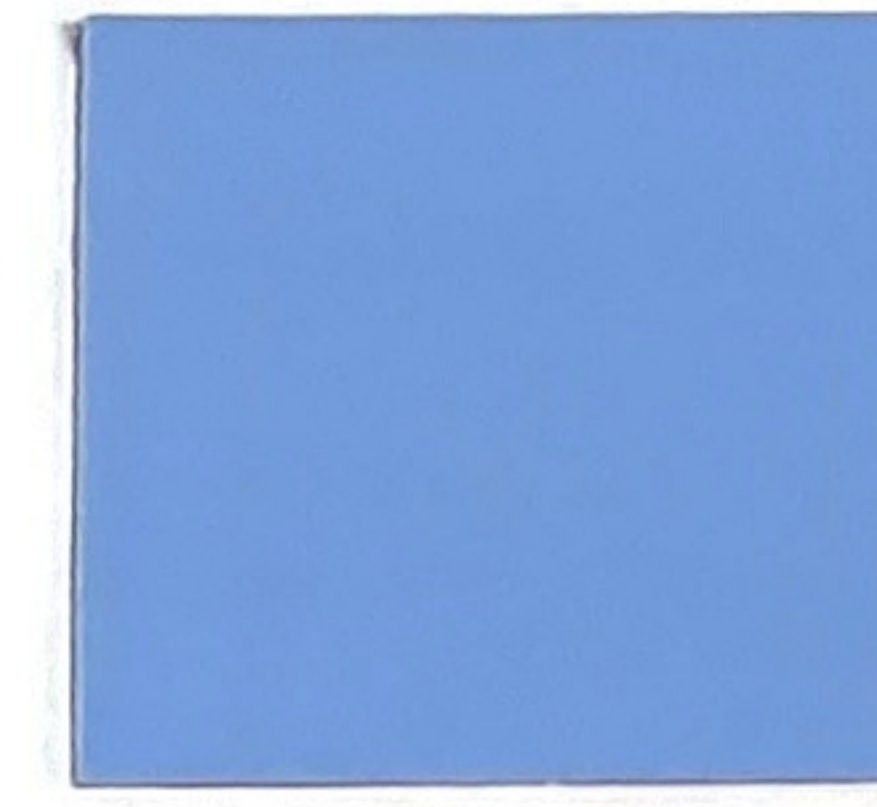
BR-177 Dune



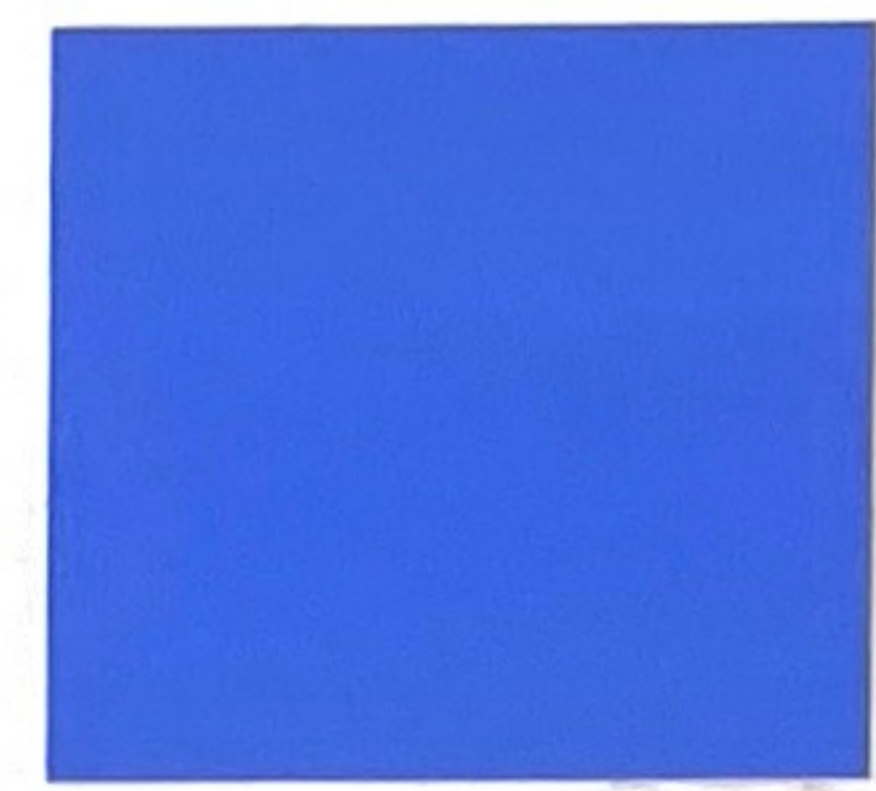
BR-492 Papyrus



BR-164 French Blue



BR-131 Sky



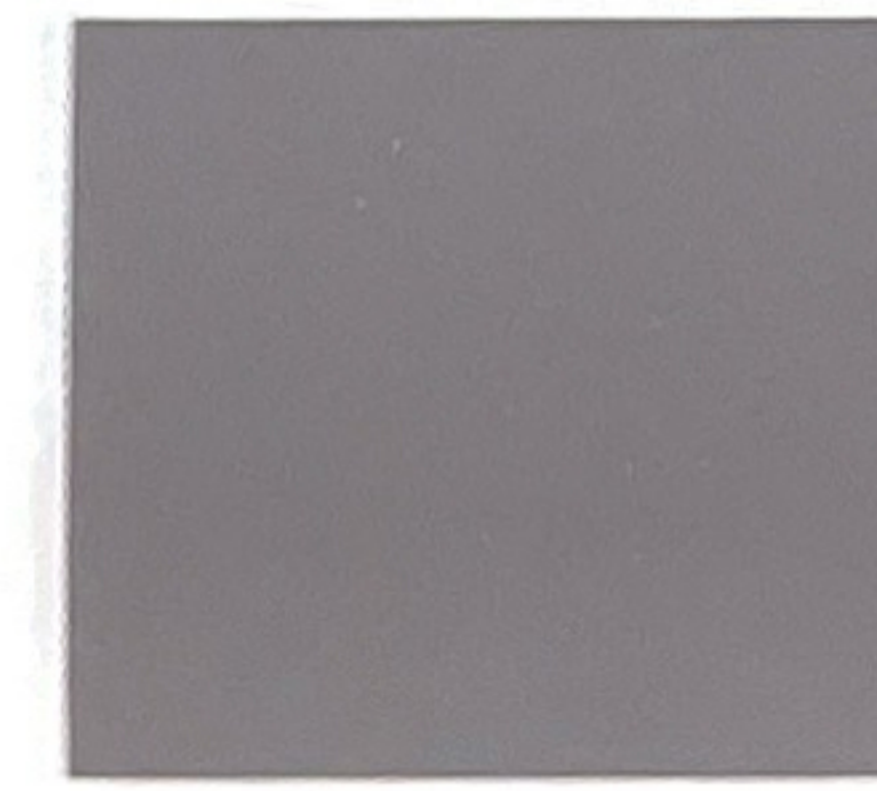
BR-723 Regatta



BR-222 Marine



BR-563 Diplomat Blue



BR-47 Nickel



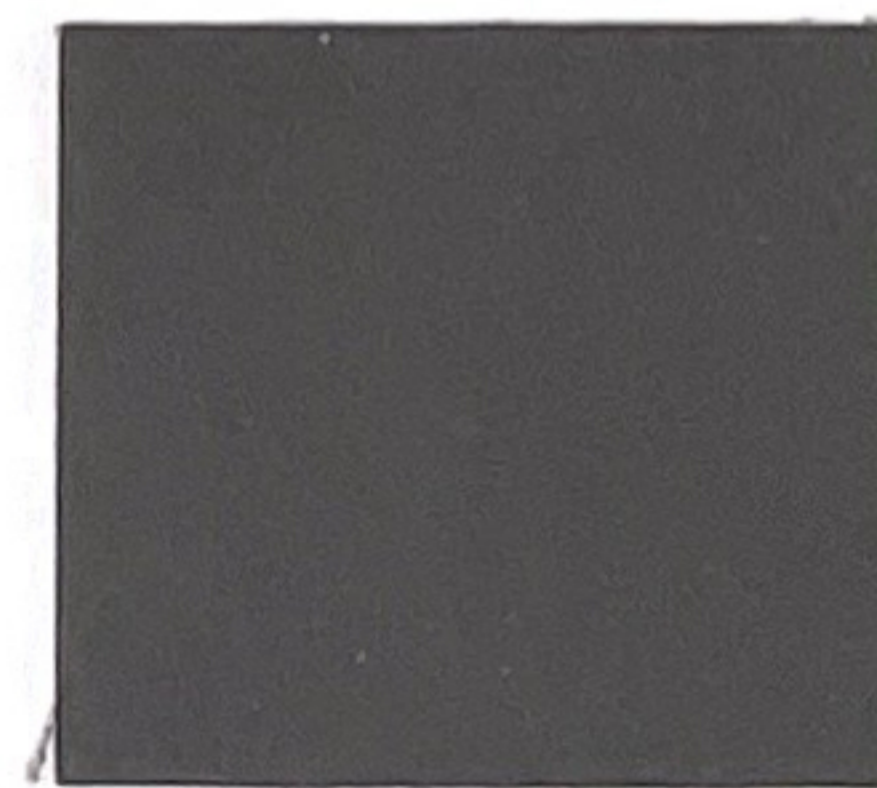
BR-162 Cinnamon



BR-24 Jacobean



BR-136 Forest Green



BR-381 Shadow



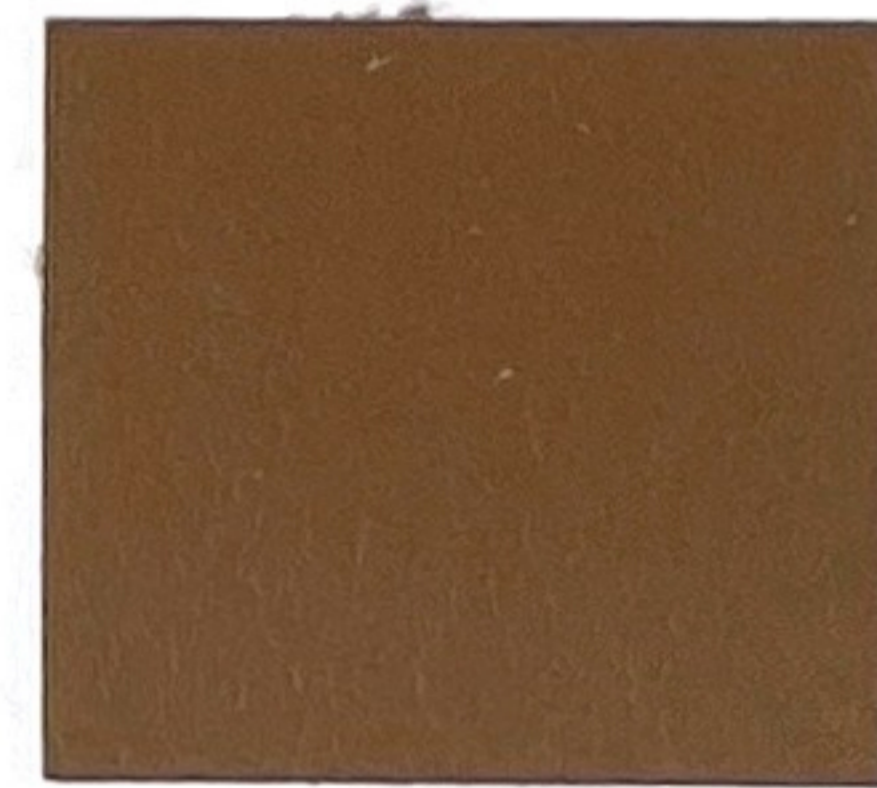
BR-134 Island Punch



BR-178 Sable



BR-165 Artichoke



BR-25 Chestnut



BR-719 Charcoal



BR-167 Cypress



BR-705 Red



BR-133 Purple



BR-703 Pecan



BR-132 Burgundy



BR-45 Sedona



BR-30 Ravenwing





# Soft Touch

COLLECTION



[www.advancedfabrics.co.uk](http://www.advancedfabrics.co.uk)

## Soft Touch

### GENERAL SPECIFICATIONS

<b>Composition:</b>	100% Polyurethane Surface 100% Reinforced Rayon backing
<b>Weight:</b>	Approx. 9.7 oz. Per Square yd
<b>Thickness:</b>	Approx. 0.95 Millimeters
<b>Width:</b>	54 inches

### PERFORMANCE

<b>Abrasion:</b>	ASTM D4157 / 400,000 Double Rubs (Wyzenbeek)
<b>Hydrolysis:</b>	16+ weeks ASTM D3690 sec.611 ( Hydrolytic Stability)
<b>Adhesion of coating:</b>	ASTM D751
<b>Tear Strength:</b>	ASTM D2261
<b>Breaking Strength:</b>	ASTM D751
<b>Tensile Strength:</b>	BS EN ISO 1421

### COLORFASTNESS

1,000 Hours AATCC-16A, Carbon / Arc Outdoor

### FLAMMABILITY REQUIREMENTS

- ASTM E84 (Adhered- Class A)
- CA TB 117-2013 Pass
- FMVSS 302 & 95/28 Annex IV-pass
- NFPA 260 – Class 1
- UFAC-Class 1
- CA AB 2998
- These fabrics can be treated to pass FAR 25.853 12 second Vertical

For more information about cleaning and care instructions, please feel free to give us a call.



Advanced Fabrics Ltd

Unit 6b Brookside Industrial Estate

Sawtry

Huntingdon, Cambridgeshire, PE28 5SB

[www.advancedfabrics.co.uk](http://www.advancedfabrics.co.uk)

Phone Number: 01487 843300